

Recessed luminaire - Opal diffuser - direct distribution

Suitable for ceilings with visible T-bars; flat aluminium frame, powered white; steel plate housing; Housing colour traffic white RAL 9016; LED backlight technology; direct light distribution using opal PMMA diffuser and single lenses. Including a multi-lumen driver with 4 settable light outputs; Flicker < 5%; Flexible 40cm long connecting cable wired to the luminaire via a plug system ready for operation. Protection rating: IP20/IP40 (room) Accessories: please order the installation frame 60110003100 for installation in cut-out ceilings, the frame 60110005100 for ceiling surface-mounting and feed-through wiring box DV-BOX ET for convenient connection to the control gear separately. Further operating data can be found in the operating instructions.

CHARACTERISTICS

Order number	60113034110
EAN number	4020863422265
Commodity code	94051190
Certification mark	IP 40/20, Protection class II, F, Indoor, CE
Impact resistance (IK rating)	IK02 (-10°C bis 35°C)
Ambient temperatur	ta -10°C to 35°C
Warranty period	5 years
State funding programs	BEG - Federal funding for efficient buildings (valid only for Germany)

ELECTRICAL ENGINEERING

Controller	Electronic multi-lumen driver, 4-steps (1 pcs.)
System output	39W-30W
Mains voltage	230V/50Hz
Energy efficiency class/light source	C

LIGHTING TECHNOLOGY

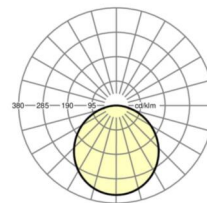
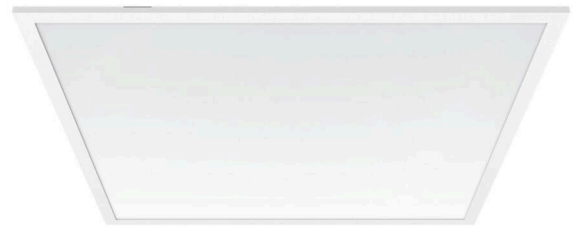
Placement	LED, Colour rendering/Light colour CRI ≥ 80 / 3000K
Colour tolerance (MacAdam)	3SDCM
Nominal luminous flux/switching steps (EDM)	4800lm/39W, 4400lm/36W, 4200lm/34W, 3800lm/30W (Standard setting 4200lm)
LED service life	50000h L80/B10 (Tq 35°C/do not cover with insulation wool)
Luminaire luminous efficiency	128lm/W-122lm/W
UGR lat./long.	21.9 / 21.9 (39W)

MECHANICS

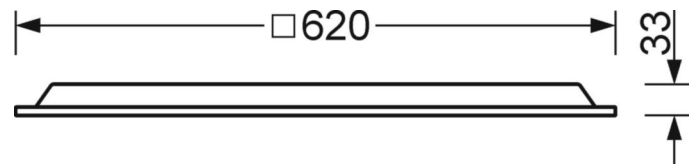
Housing colour	traffic white RAL 9016
Dimensions (LxWxH/DxH)	620mm x 620mm x 33mm
Depth	33mm
Ceiling system	Ceilings with visible T-rails [s-TS] (625x625 mm), cut-out ceilings [AD]
Ceiling cut-out (LxW/D)	648mm x 648mm (when using accessory mounting frame)
Installation depth	145mm [AD]; 145mm [s-TS]; 115mm [s-TS] min
Weight (net)	2.05kg
Type of installation	Recessed mounting, Ceiling installation individual mounting, Ceiling-mounted single installation

DEEP-LINK

<https://www.regiolum.de/en/article/60113034110>



Reference	LED 4800lm/39W 830
η_{LB}	100 %
$\Phi_{\downarrow/\uparrow}$	100 % / 0 %
UGR lat./long.	21.9 / 21.9



Dimensions

L	620 mm	Length
B	620 mm	Width
H	33 mm	Height
T	33 mm	Depth
DA(L)	648 mm	Cutting dimension length
DA(B)	648 mm	Cutting dimension width
Et(min)	115 mm	Ceiling distance minimum - minimum dimension (visible T-rail)
Et(AD)	145 mm	Ceiling distance minimum (cut-out ceiling)
Et(TS)	145 mm	Ceiling distance minimum - recommended (visible T-rail)
MLTS1	625 mm	Module dimension length (visible T-rail)
MLTS_1/2	625	Module dimension length (visible T-rail) 1/2
MBTS1	625 mm	Module dimension width (visible T-rail)
MBTS_1/2	625	Module dimension width (visible T-rail) 1/2
KL	144 mm	Length luminaire head or box for ballasts
KB	42 mm	Width luminaire head or box for ballasts
KH	29 mm	Height luminaire head or box for ballasts

